

# BAKRIE AUTOPARTS GROUP COMPANY PROFILE



PT. Bakrie Autoparts



PT. Braja Mukti Cakra



PT. Bina Usaha Mandiri Mizusawa

# CONTENTS

**1** ABOUT BAKRIE AUTOPARTS GROUP

**2** STRATEGIC STRENGTH

**3** CREDENTIALS

# 1. ABOUT BAKRIE AUTOPARTS GROUP



# ABOUT US

COMMITTED TO GIVE YOU EXCELLENT SERVICE.

Bakrie Autoparts (BA), formerly known as Bakrie Tosanjaya has transformed into a global automotive components manufacturer focused on increasing value and creating investment opportunities for business partners.

Bakrie Autoparts is expanding its business to become an integrated automotive component manufacturer, and also supplies general casting items.

.

We hardly strive to be in line with our company's vision as "Indonesia's Leading Automotive Component Company in Producing Various Products and Diversifying Investments in the Automotive Industry".





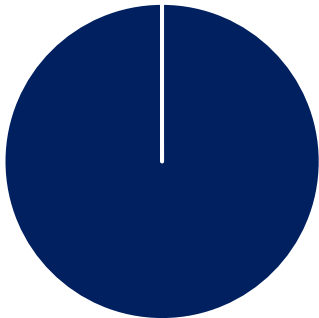
# OUR GROUP



**PT. BAKRIE AUTOPARTS**

Established : 1974

VKTR: 99.99%



KSK: 0.01%

**Line of Business :**

Automotive Components Manufacturer & General Casting (Foundry and Machining), Electric Vehicles

- Product Weight > 30 Kg
- Product dominance for the undercarriage of vehicles



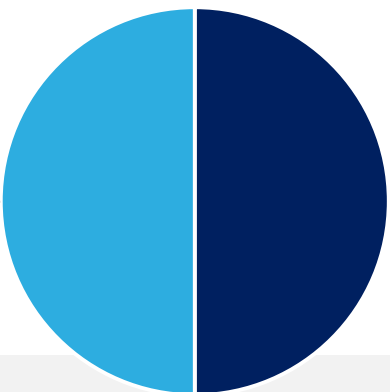
Pondok Ungu, Bekasi, Jawa Barat



**PT. BRAJA MUKTI CAKRA**

Established : 1985

BA: 50%



KTB; 50%

**Line of Business :**

Precision Machining for Automotive & General Casting



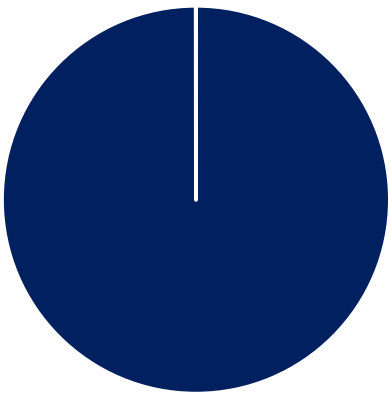
Harapan Jaya, Bekasi, Jawa Barat



**PT. BINA USAHA MANDIRI MIZUSAWA**

Acquired : 2011

BA: 99.99%



KSK: 0.01%

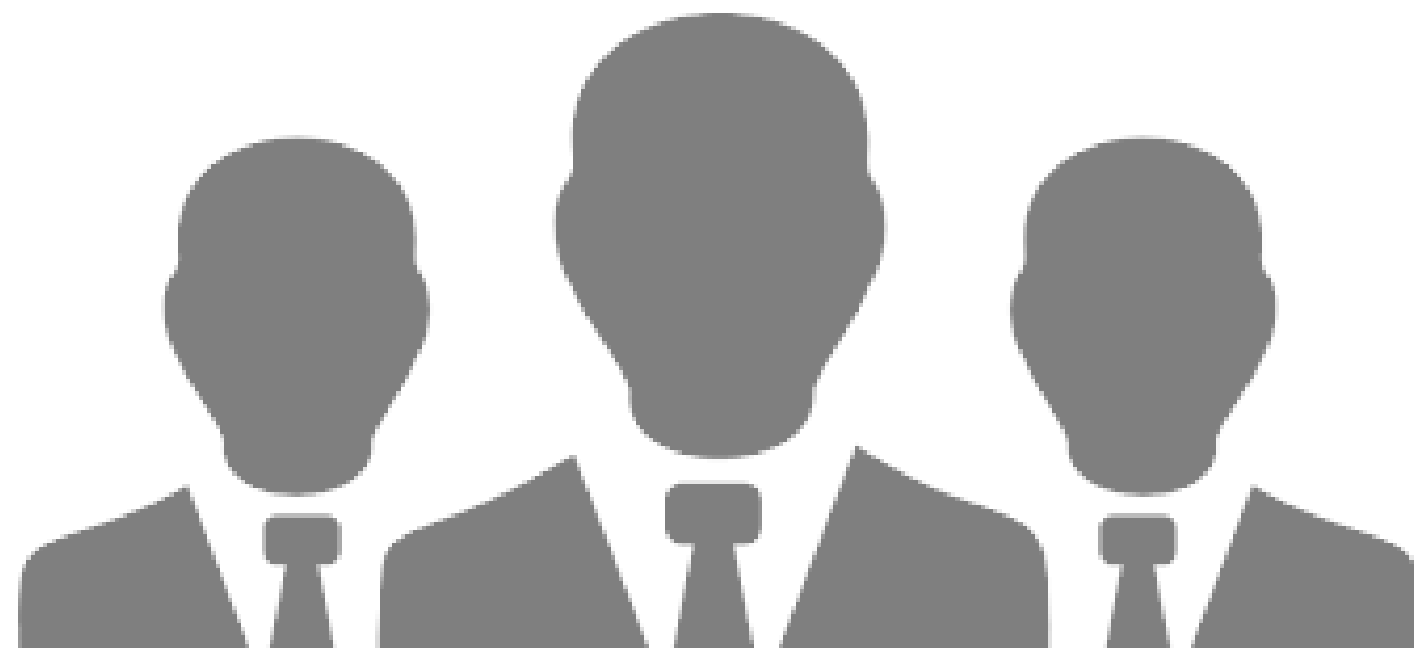
**Line of Business :**

Automotive Components Manufacturer & General Casting (Foundry and Machining)

- Product Weight < 20 Kg
- Product dominance for the engine
- Complicated product profile shapes



Jati Uwung, Tangerang, Banten



## MANAGEMENT

### Board of Commissioners

### Board of Directors



**Anindya N. Bakrie**  
President Commissioner

**R. Atok Hendrajanto**  
Commissioner

**V. Bimo Kurniatmoko**  
President Director

**Mahzil Febri**  
Director



**Dino Ahmad Ryandi**  
President Commissioner

**Takuya Ogawa**  
Commissioner

**V. Bimo Kurniatmoko**  
President Director

**Ahmad Abadi**  
Director



**Dino Ahmad Ryandi**  
Commissioner

**Mahzil Febri**  
Director



# OUR KEY CUSTOMERS

## Commercial Vehicles



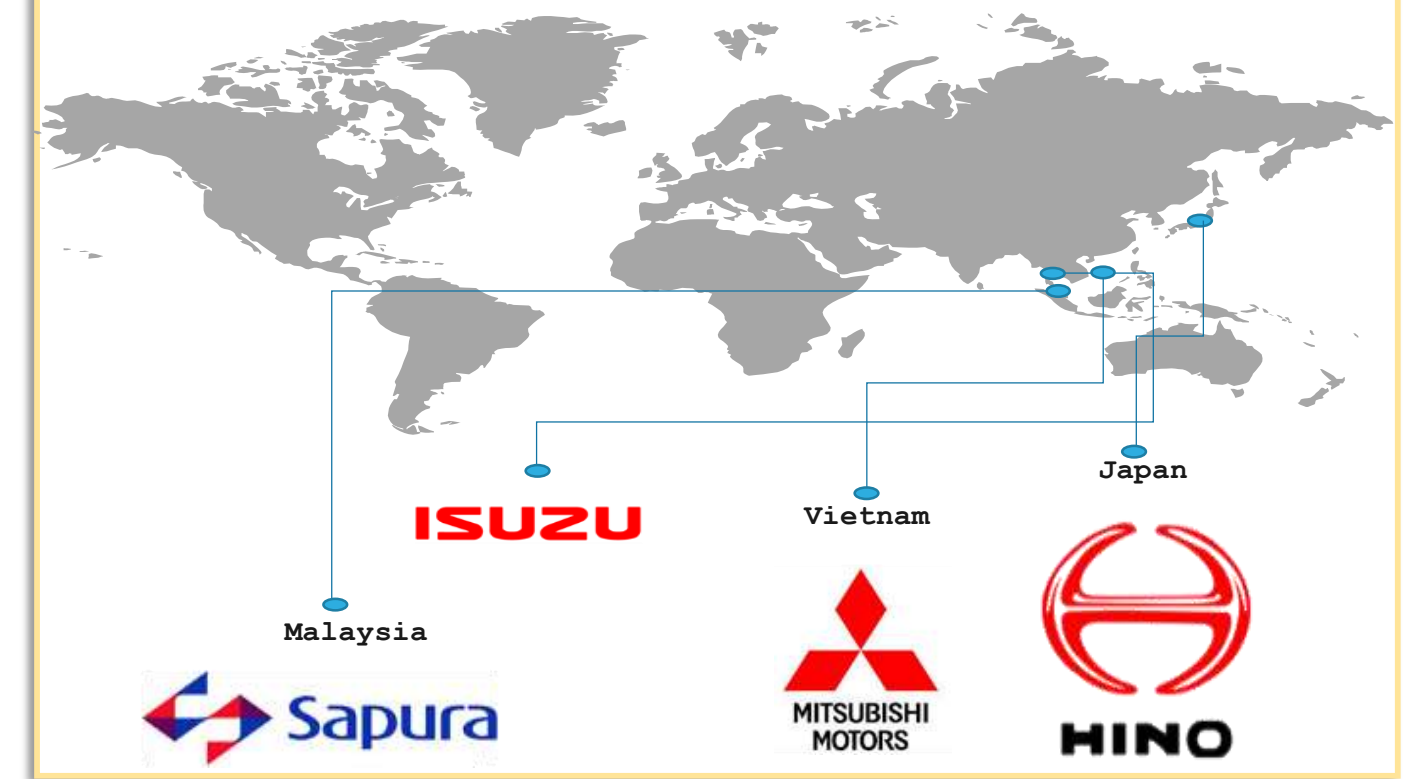
## Passenger Car



## Non-Automotive Market



## Export





CERTIFICATIONS



IATF 16949



ISO 9001



ISO 14001



ISO 45001





## 2. BAKRIE AUTOPARTS STRATEGIC STRENGTH



# BAKRIE AUTOPARTS GROUP STRATEGIC STRENGTH



## EXPERIENCED

- 50 years of experience in the automotive supply industry.
- We are supported by professionals with diverse knowledge and backgrounds as well as extensive work experience who are working on a variety of highly complex automotive components
- Excellent engineering competence, competitive prices, and product quality assurance.

## HI-TECH DRIVEN

- We strive to consistently meet the market's growing demands by expanding our product capabilities through high-precision components and advanced technological equipment.

## CUSTOMER ORIENTED

- Provide customers with the best service and solutions to face the increasingly complex challenges of the automotive industry.

## INTEGRATED SERVICES

- Integrated automotive components manufacturer: manufacturing, distribution and sales.



## EXPERIENCES AND CAPABILITIES CASTING AND MACHINERY

**AUTOMOTIVE PARTS**



## EXPERIENCES AND CAPABILITIES

### AUTOMOTIVE PARTS

Bakrie Autoparts group is capable of producing a wide range of castings and machinery, both small and large automotive parts

#### SMALL PARTS



Hub Wheel



#### BIG PARTS



Drum Brake



# EXPERIENCES AND CAPABILITIES

## AUTOMOTIVE PARTS

Particularly, we are capable of producing a wide range of castings and machinery of Categories 2 and 3 for Mitsubishi Fuso

### CATEGORY 2



Drum Brake



Fly Wheel



Pressure Plate



Hub Wheel



### CATEGORY 3



Hub & Drum Assy



Hub Wheel



Drum Brake



**Braking System Components**



Disc Brake



Hub Assy



Case Bearing



Knuckle  
Steering

Axle Assy  
Fr



**Engine Components**

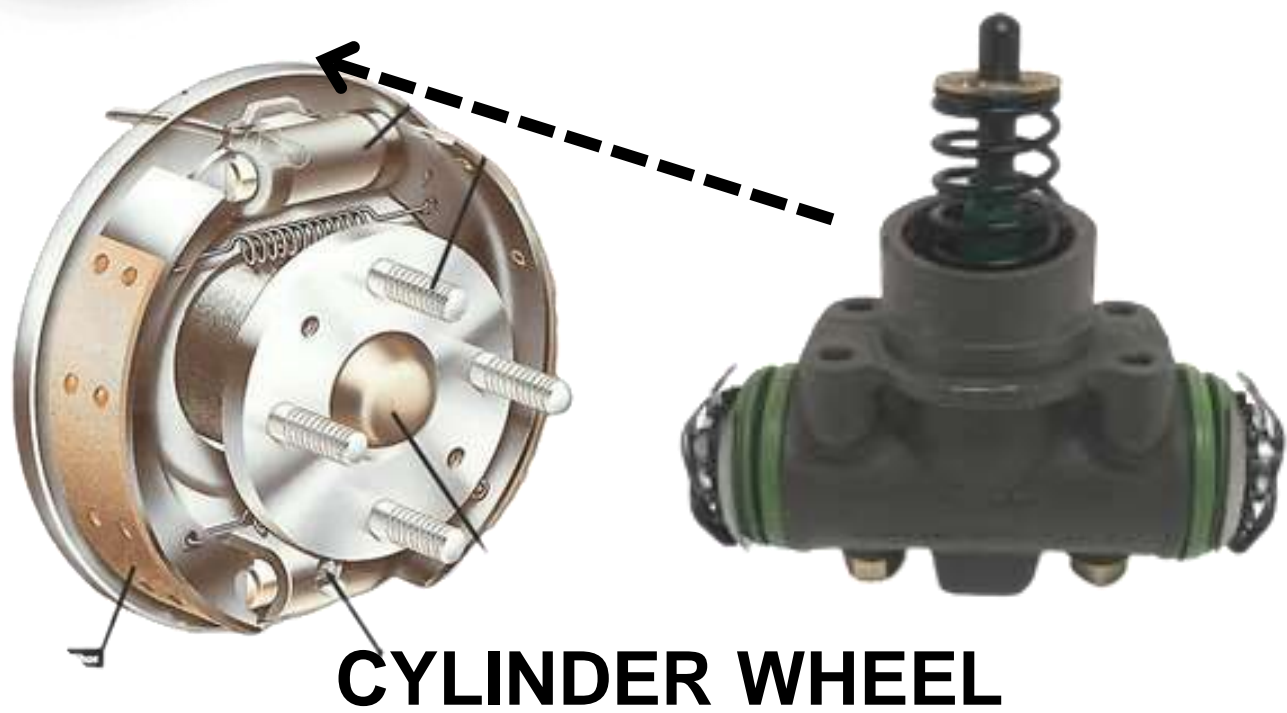
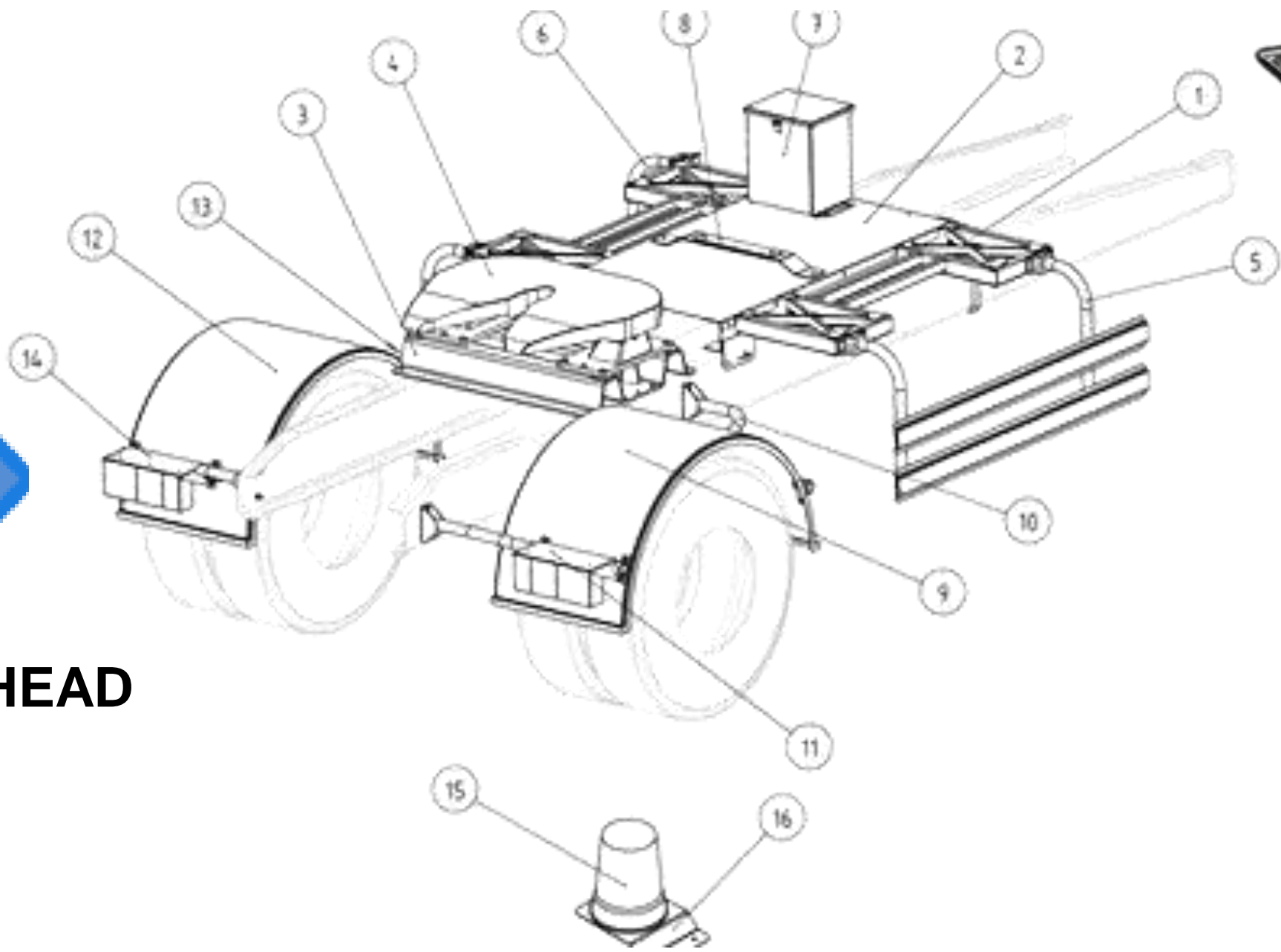


Bracket Engine





**EXPERIENCES AND CAPABILITIES**  
**AUTOMOTIVE PARTS – NON IRON CAST PARTS**





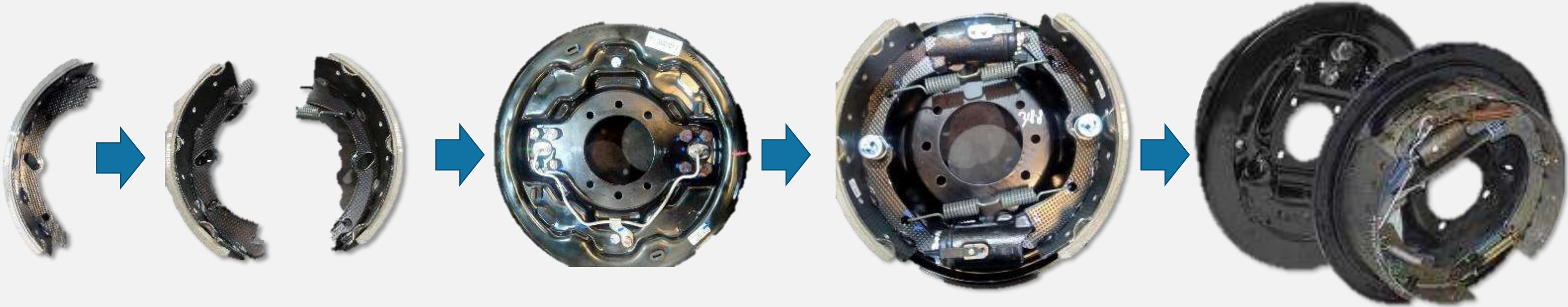
# EXPERIENCES AND CAPABILITIES

AUTOMOTIVE PARTS – BRAKE ASSEMBLY



Our Group has brake assembly line for commercial car.

Brake Axle Assy.





## EXPERIENCES AND CAPABILITIES CASTING AND MACHINERY

### GENERAL CASTING PARTS

Bakrie Autoparts is equipped to be a strategic partner for producing complex engine parts, leveraging its extensive experience in general casting across diverse sectors.



### Starting Motor

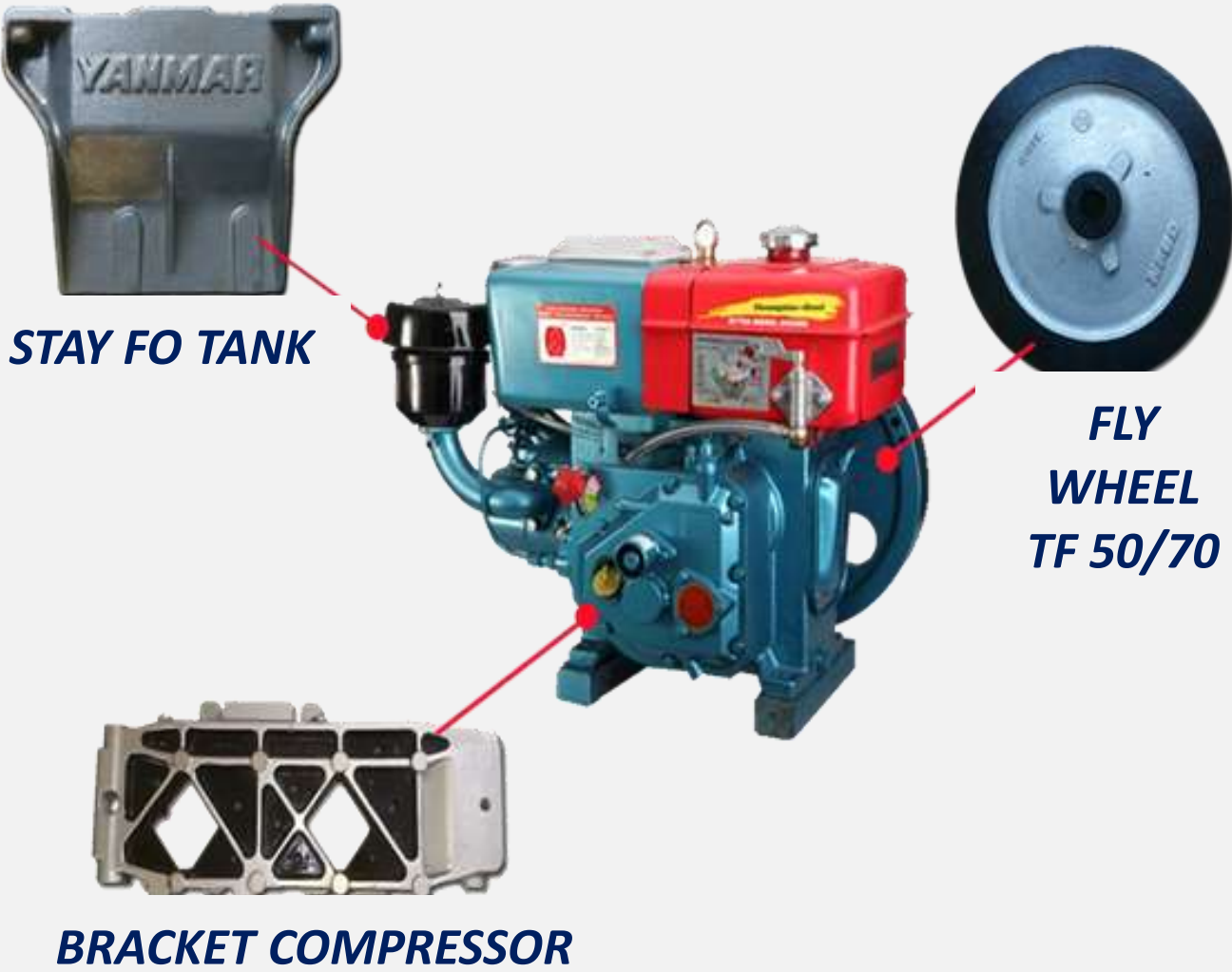
*FRONT BRACKET*



### Water Pump



### Diesel

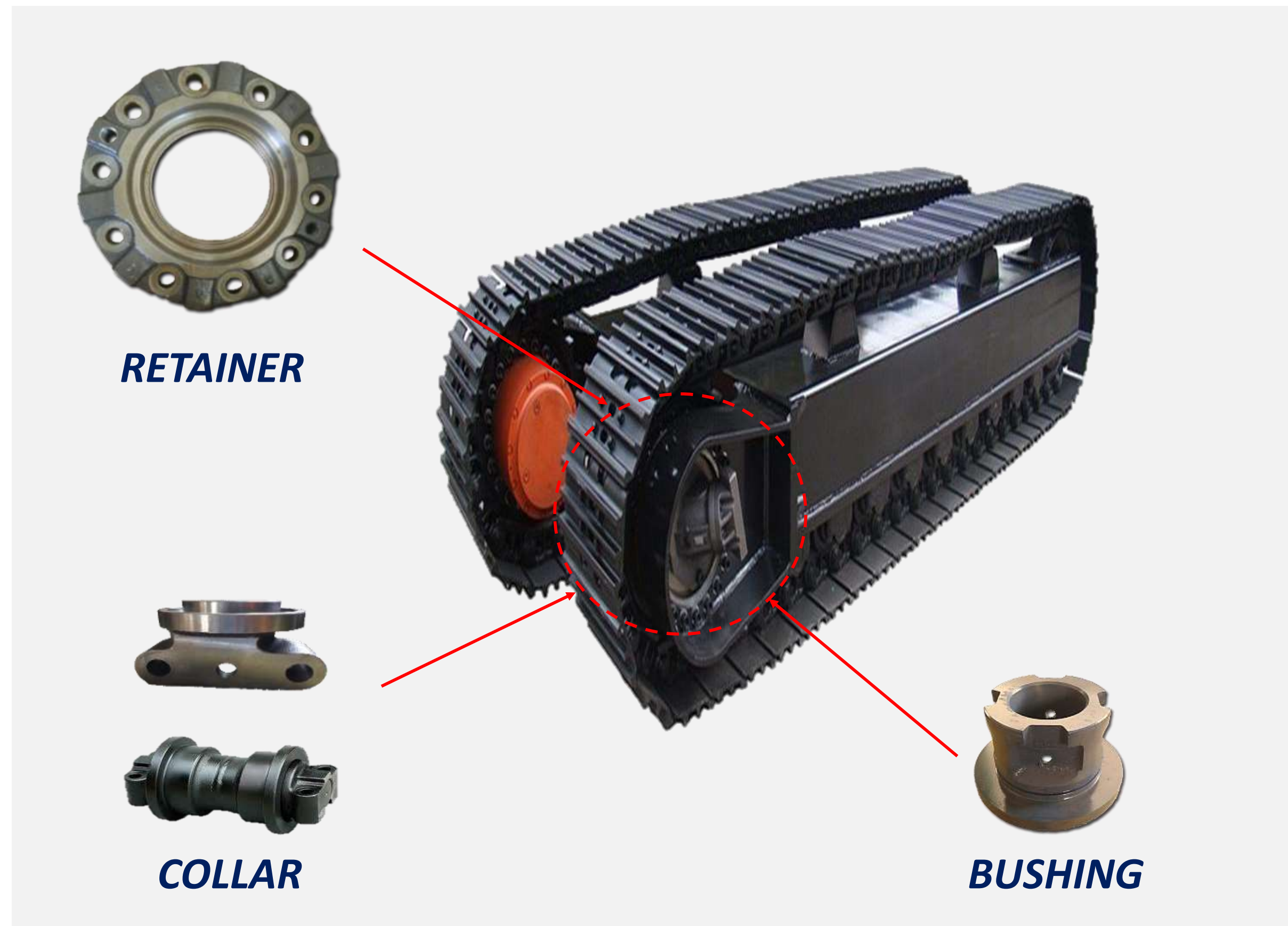




# EXPERIENCES AND CAPABILITIES

## GENERAL CASTING PARTS

19



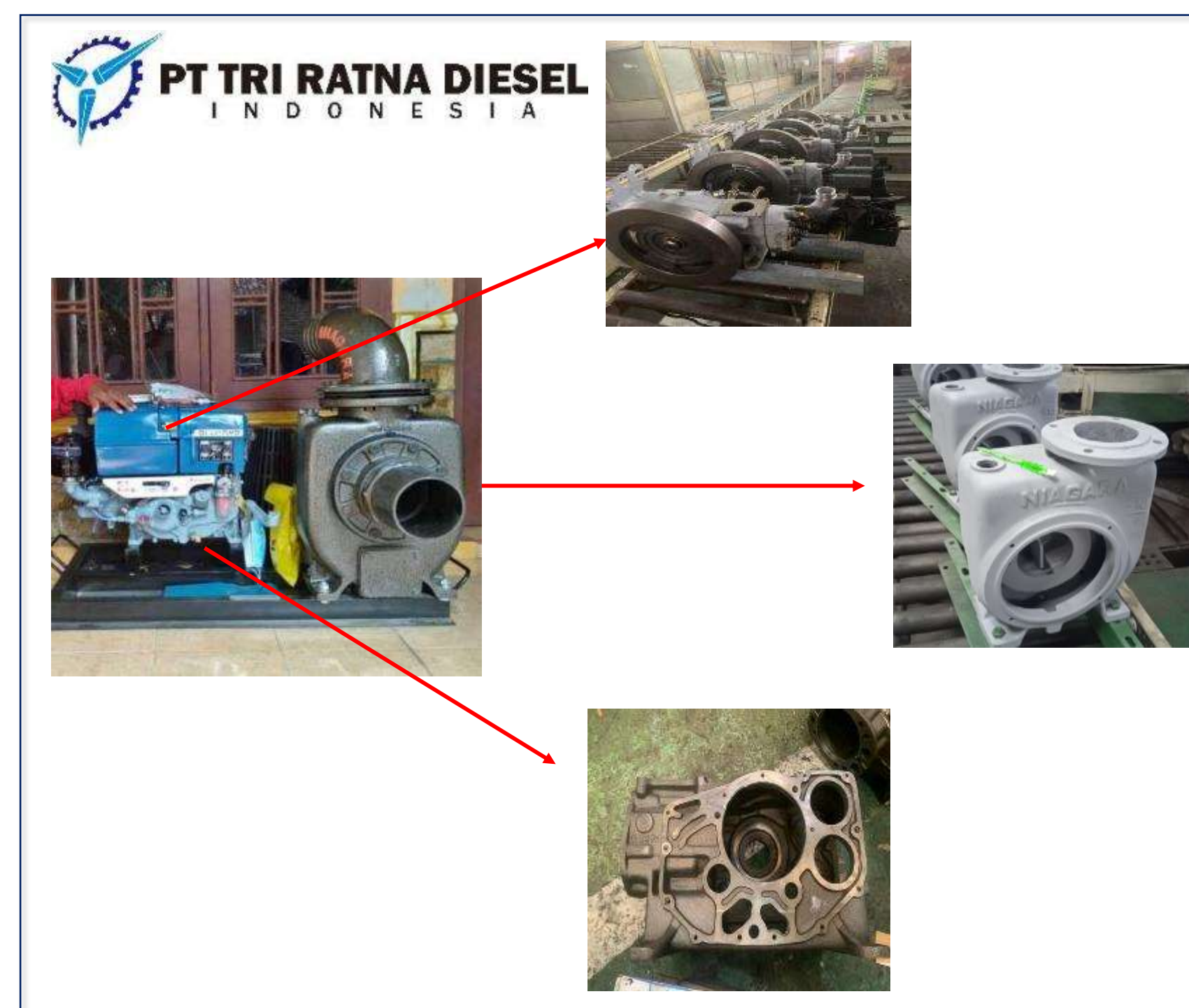
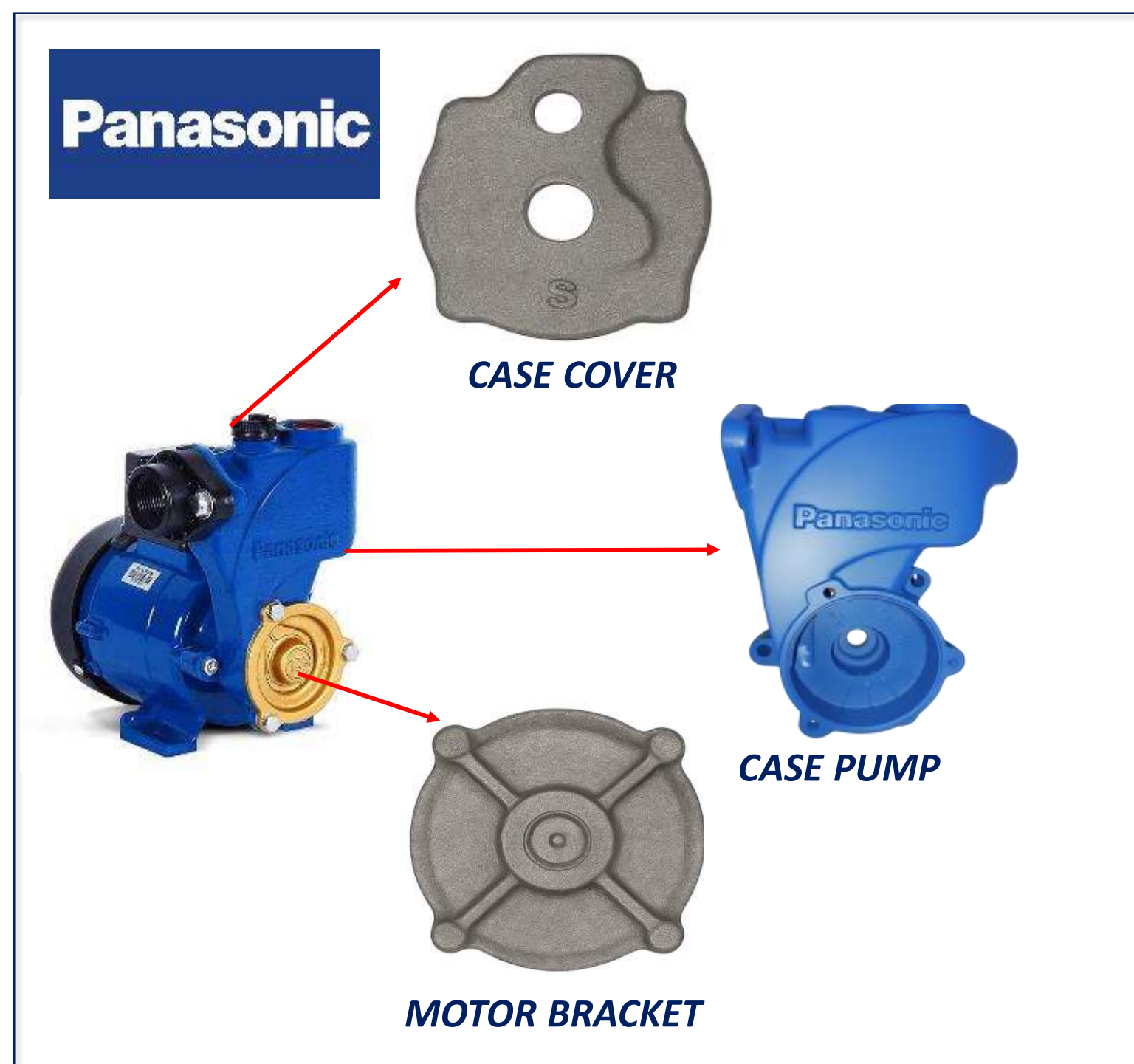


## EXPERIENCED AND CAPABILITIES

### GENERAL CASTING PARTS

### Water Pump Parts

More than 25 years of experience in manufacturing water pump components



- 29 number of active parts
- Second largest supplier of cast iron to Panasonic
- Average order 120 tons/month



**Valve Parts**

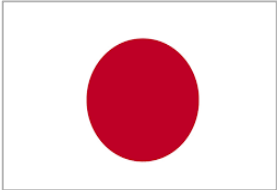
**STARTING MOTOR**



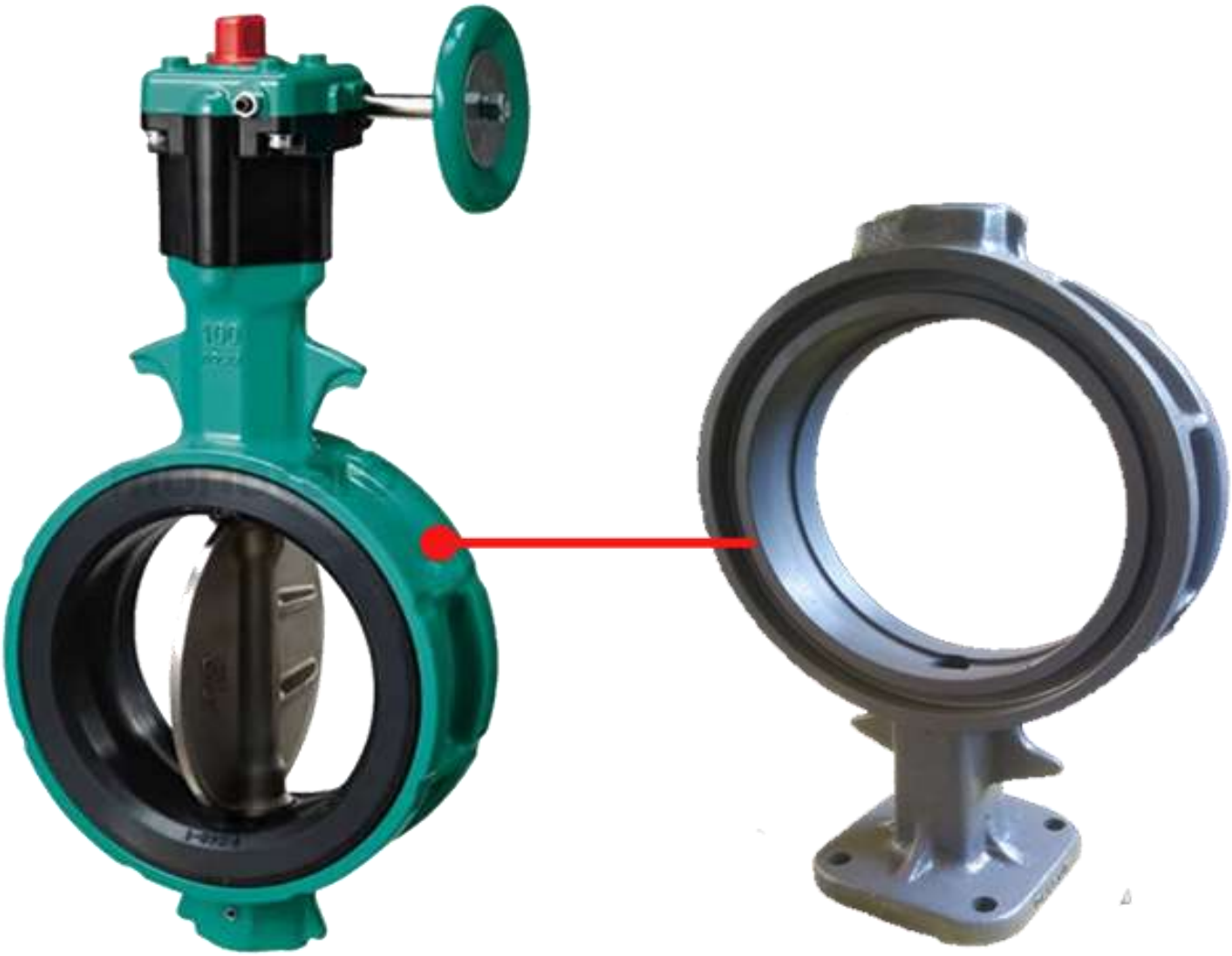
*FRONT BRACKET*

Exported by  
customer

*JAPAN*



**BODY PARTS**



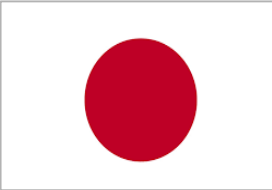
**VALVE BODY 700G/150**

Exported by  
customer

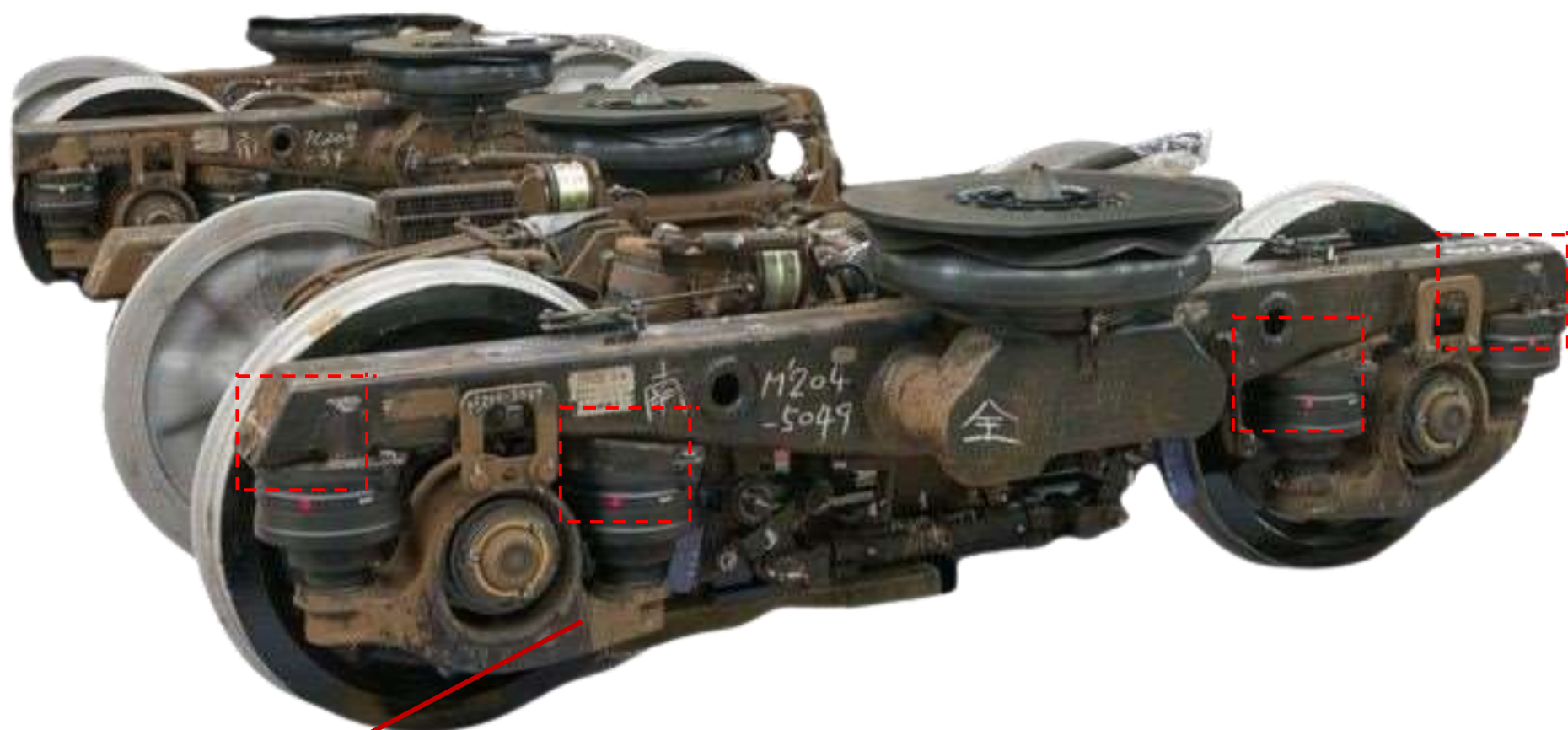
*CHINA*



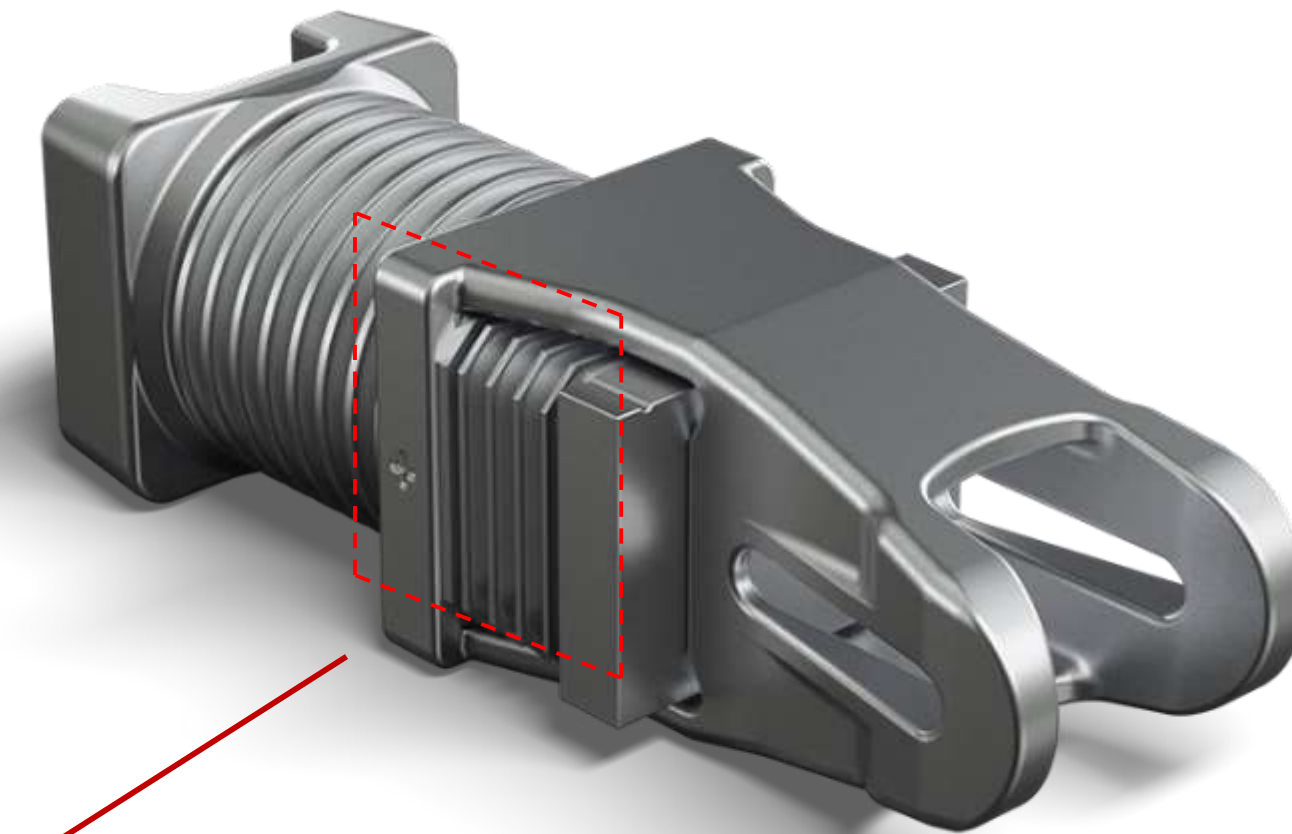
*JAPAN*



## TRAIN COMPONENTS



CONNICAL TUBE



DRAFT GEAR FOLLOWER

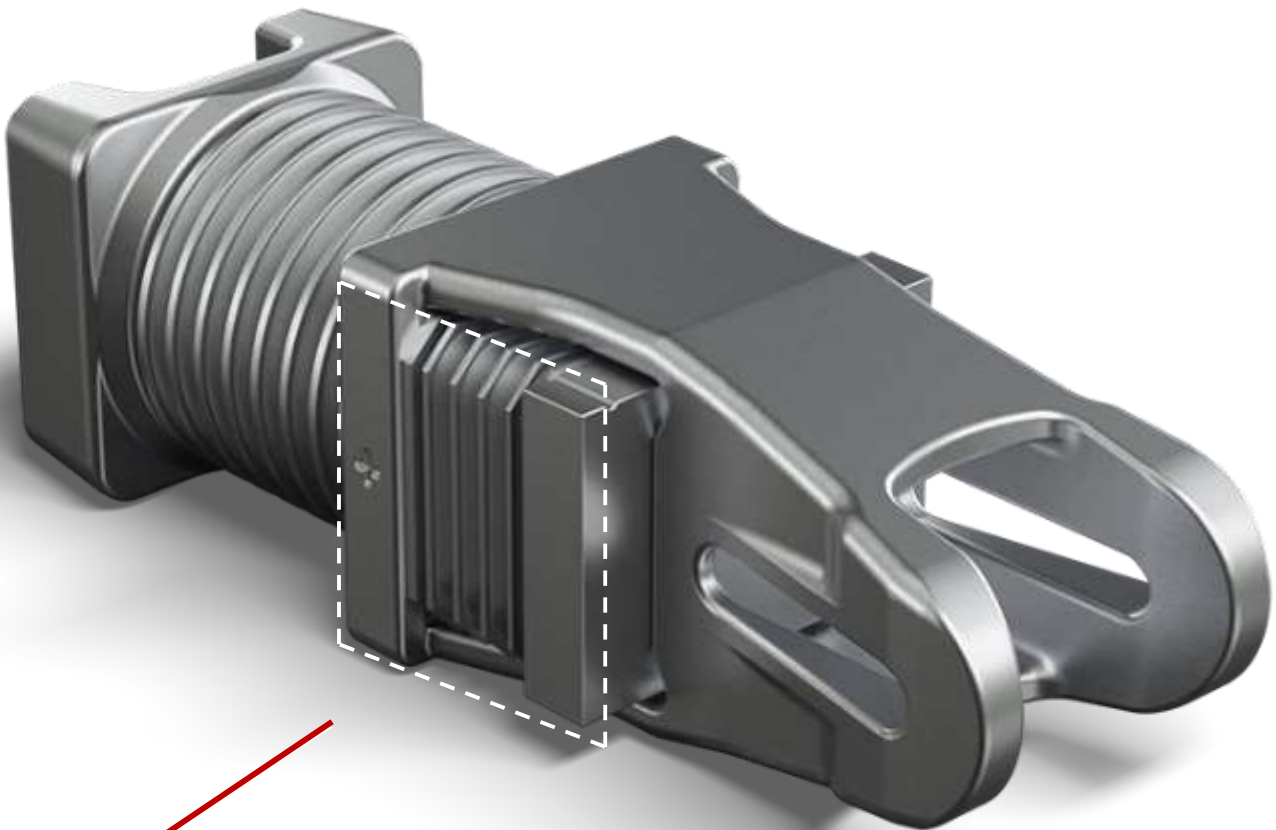




Train Component



CONNICAL TUBE



DRAFT GEAR FOLLOWER

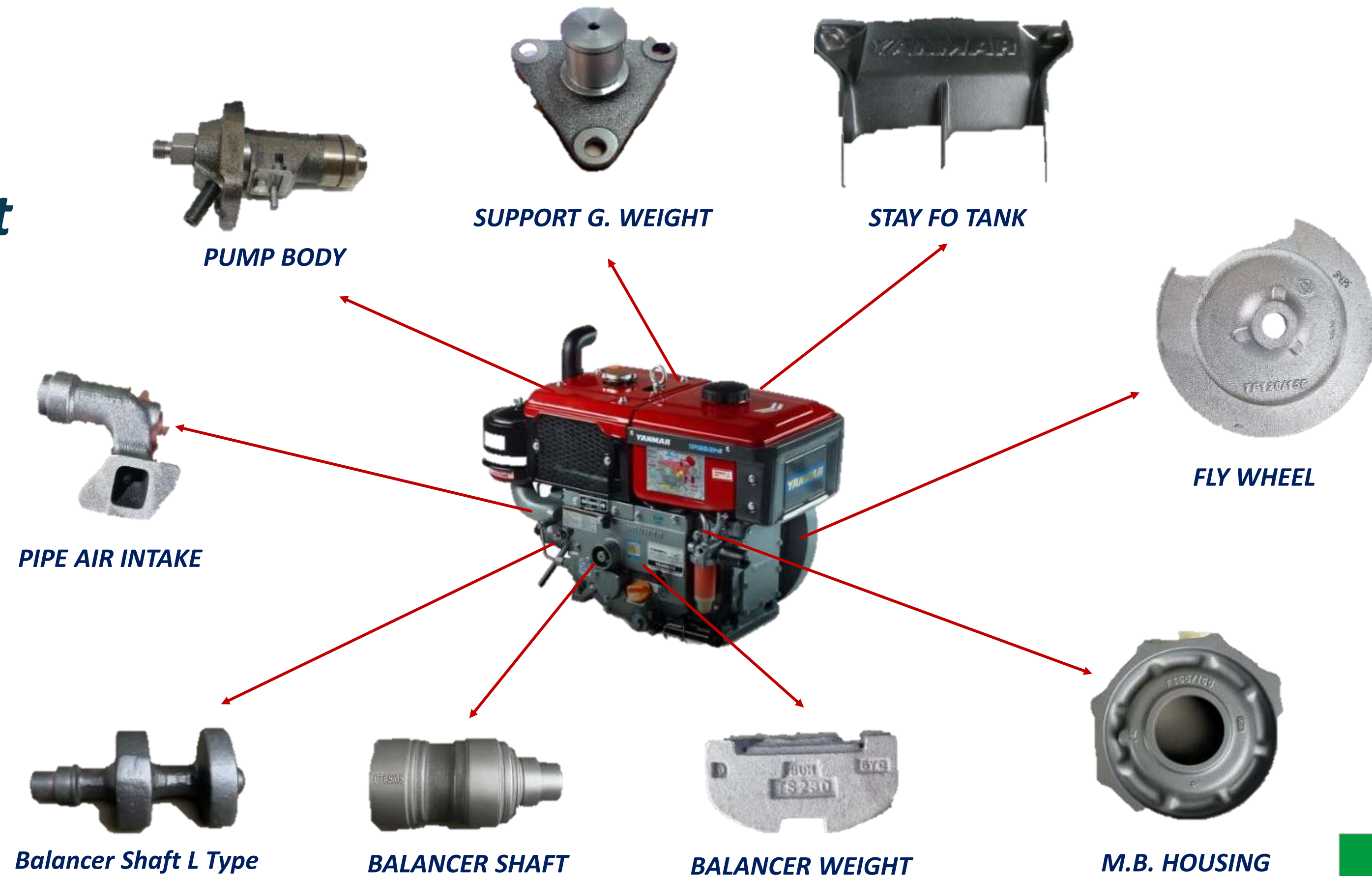


## EXPERIENCED AND CAPABILITIES

### General Casting Parts



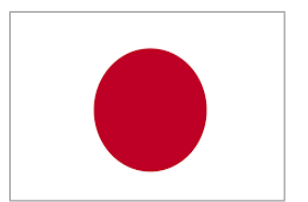
- *71 active parts*
- *Various types of weight from 0.4 – 35 kg*
- *Average order 75 tons/month*



ITALY



JAPAN





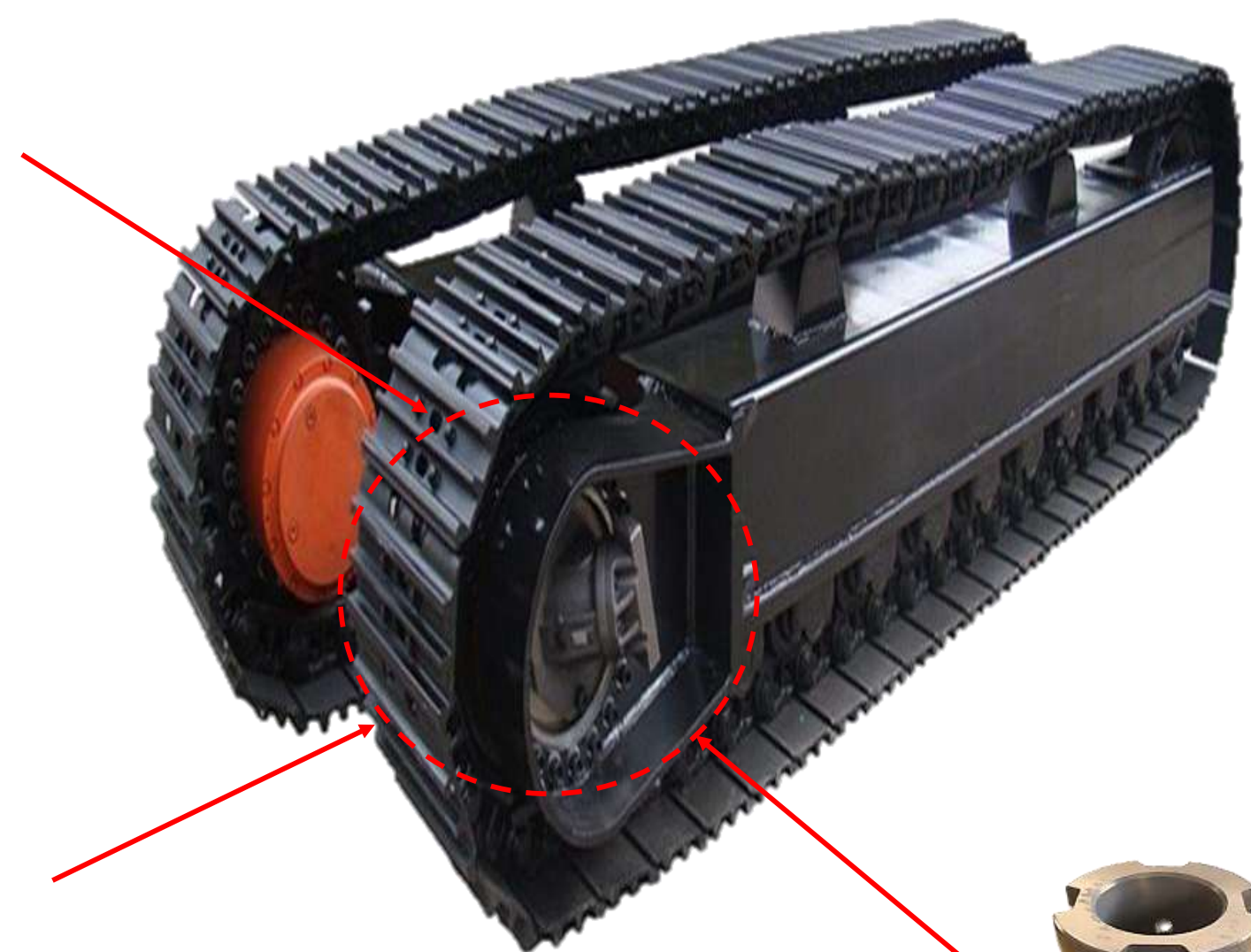
**EXPERIENCED AND CAPABILITIES**  
General Casting Parts

# KOMATSU

PT. KOMATSU UNDERCARRIAGE INDONESIA



**RETAINER**



**COLLAR**



**BUSHING**





# EXPERIENCED AND CAPABILITIES

GENERAL CASTING PARTS



Baking Wheel



BAKING WHEEL

Stove Equipment



UNFLUED WORK RING



Infrastructure Parts:  
Toll Road Strategic Parts



**LPBH**  
**(LANDASAN PUTAR BEBAS**  
**HAMBATAN)**

**ANCHORAGE**







# HI-TECH DRIVEN FOUNDRY FACILITIES

29

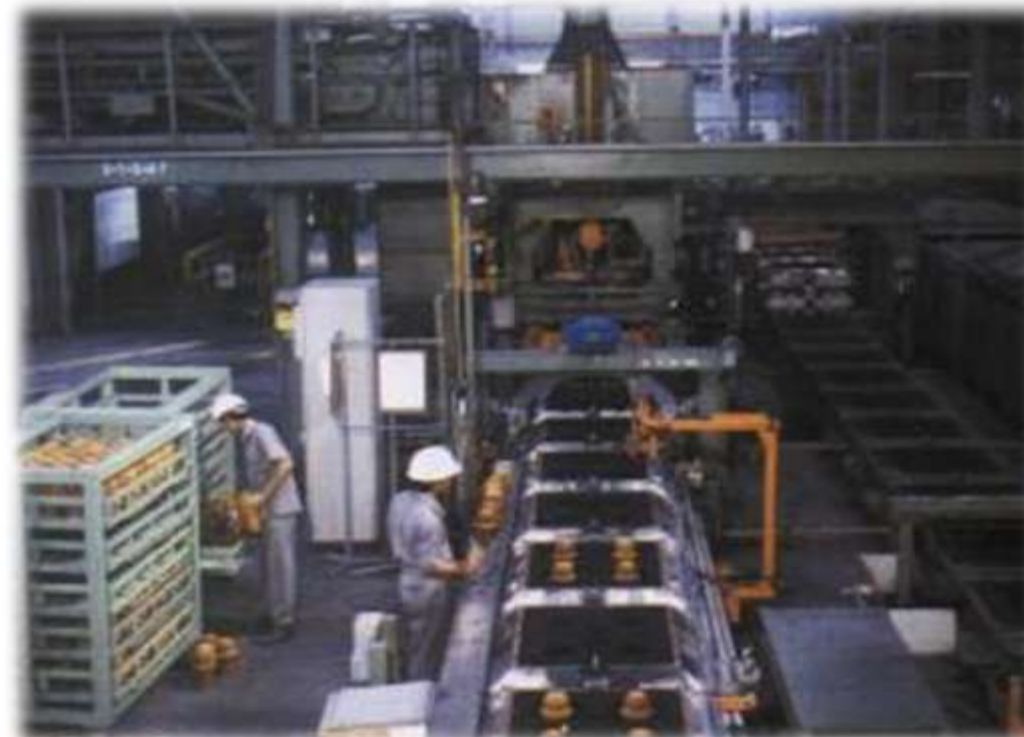


PT. Bakrie Autoparts



Shinto Line

Size : 900 X 700 X 250 (2)  
Output : 55 mould / hr  
Furnace : 2 Unit x Size 5 Ton  
Capacity : 800 Ton / Month



BMD Line

Size : 900 X 700 X 250 (2)  
Output : 60 mould / hr  
Furnace : 3 Unit x Size 4 Ton  
Capacity : 1350 Ton / Month



Disamatic Line

Size : 480 x 600 (110x300)  
Output : 140 mould / hr  
Furnace : 2 Unit x Size 3 Ton  
Capacity : 550 Ton / Month



PT. Bina Usaha Mandiri Mizusawa



AMF Line

Size : 500 X 400 X 180 (2)  
Output : 140 mould / hr  
Furnace : 3 Unit x Size 5 Ton  
Capacity : 550 Ton / Month

Material Grade Variant : ➤ FC 10, 15, 20, 25 ➤ FCD 40, 45, 50, 50+Mo, 70

(The **higher the number**, the **stronger and harder** the material)



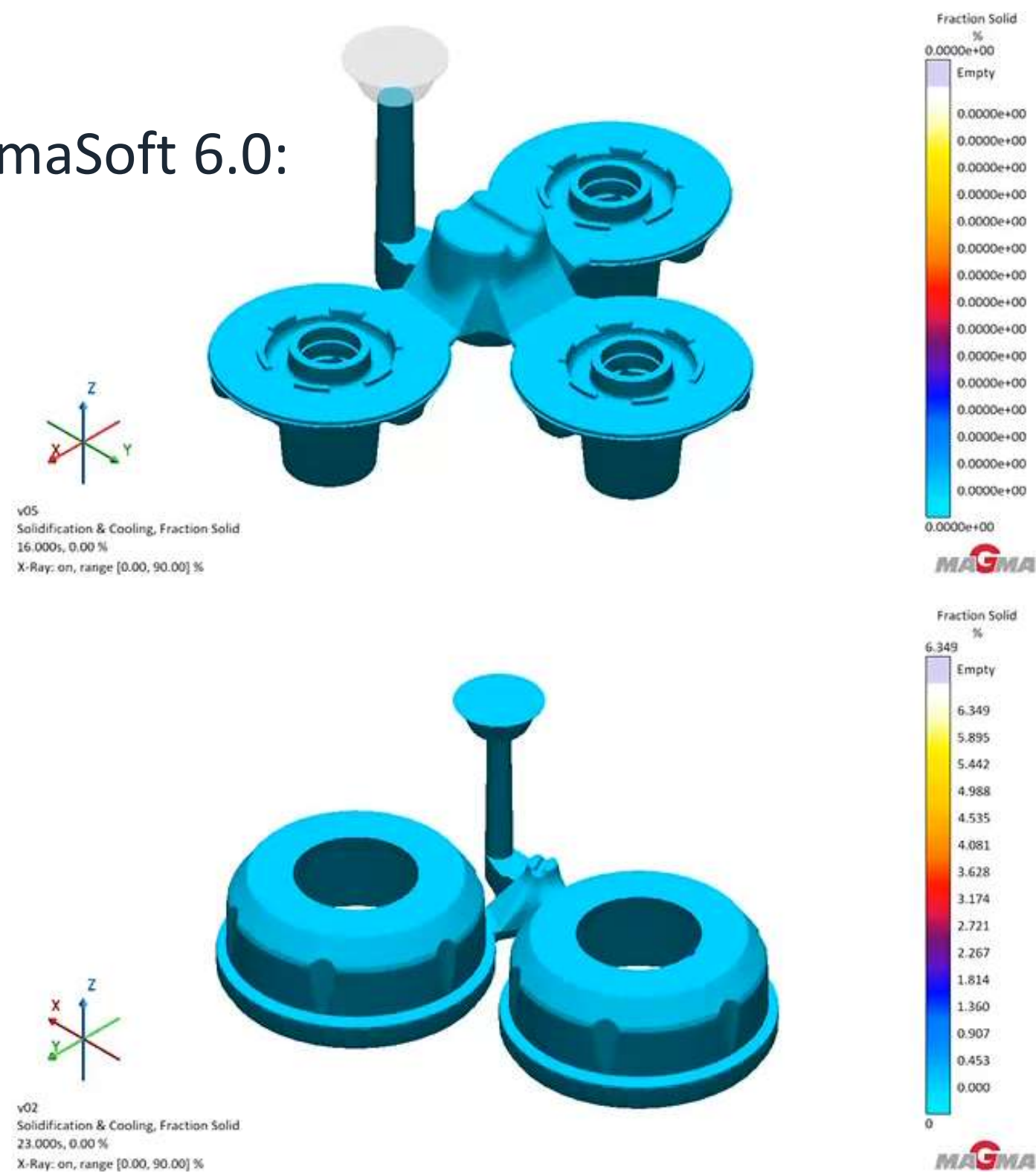


# HI-TECH DRIVEN FOUNDRY FACILITIES

ADVANCED TOOL

**MagmaSoft 6.0:** This is advanced casting simulation software that similar companies in Indonesia rarely use. This tool provides our company with a unique competitive advantage.

MagmaSoft 6.0:



Aspect	Before	After
Cost	High due to trial and error.	Lower by reducing waste and defects.
Method	Manual Calculation & Trial & Error	Computerized & optimized design
Defect Detection	Hard to detect early.	Identifies issues before casting.
Development Time	Slow with multiple tests.	Faster with optimized designs.
Material Use	Wasteful and inefficient.	More efficient and optimized.
Energy Use	High due to extra trials.	Lower with better control.
Quality	More defects, more rework.	Fewer defects, better quality.



# HI-TECH DRIVEN FOUNDRY FACILITIES

31

## ADVANCED TOOL 3D Scanning Machine



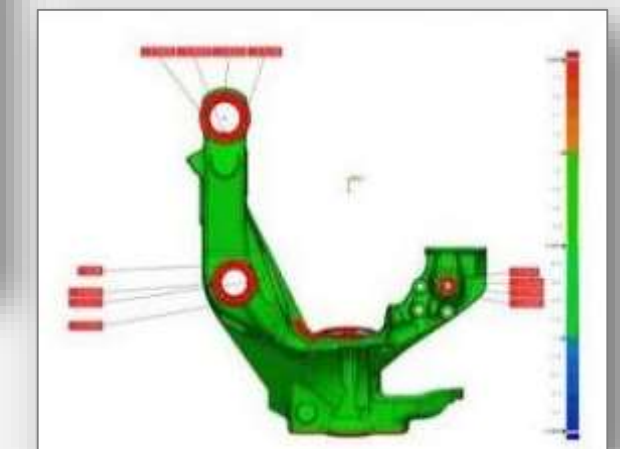
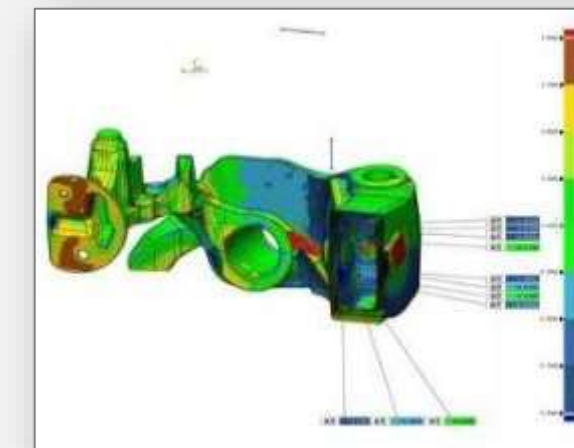
### BEFORE

- Low Accuracy
- Longer Time
- Documentation



### AFTER

- ✓ High Accuracy
- ✓ Time-Saving
- ✓ Cost-Effective
- ✓ Easy Integration
- ✓ Better Documentation



We operate a 3D scanning machines to capture accurate 3D data from physical objects, enabling a wide range of applications.



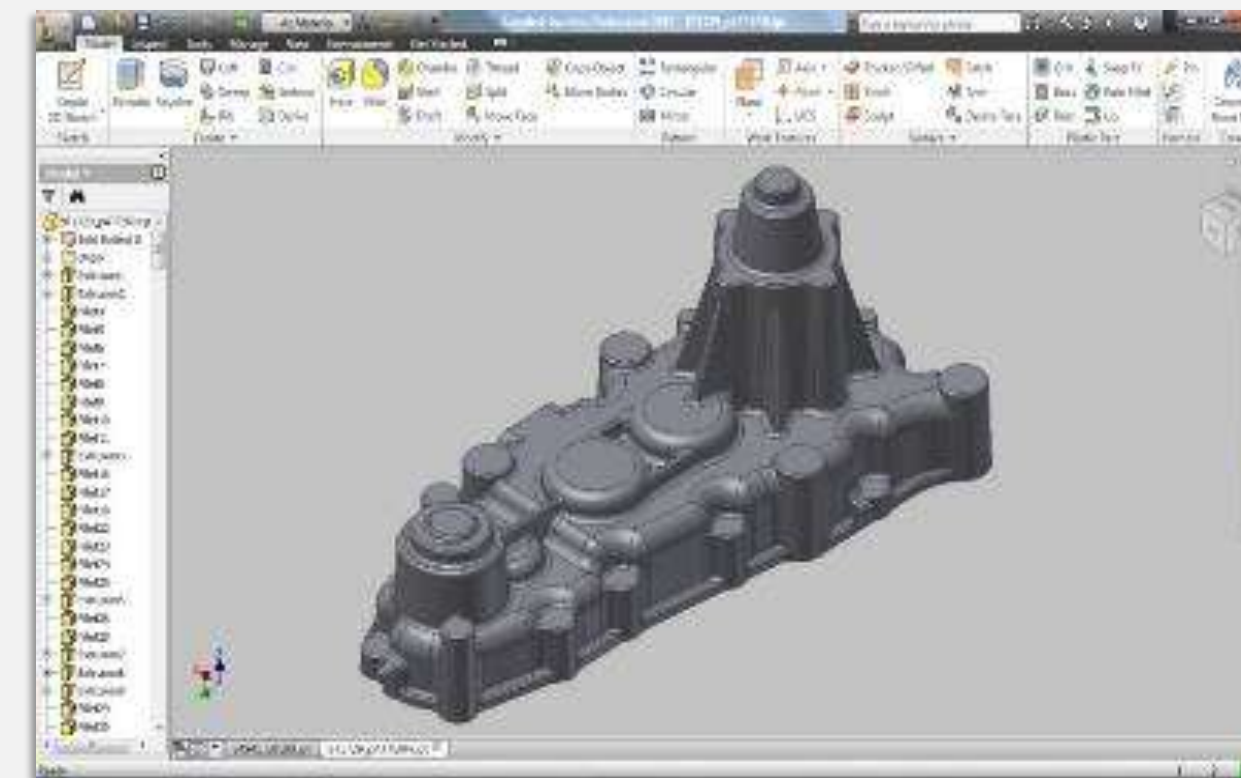
## HI-TECH DRIVEN FOUNDRY FACILITIES

### KEY SUPPORTED FACILITIES

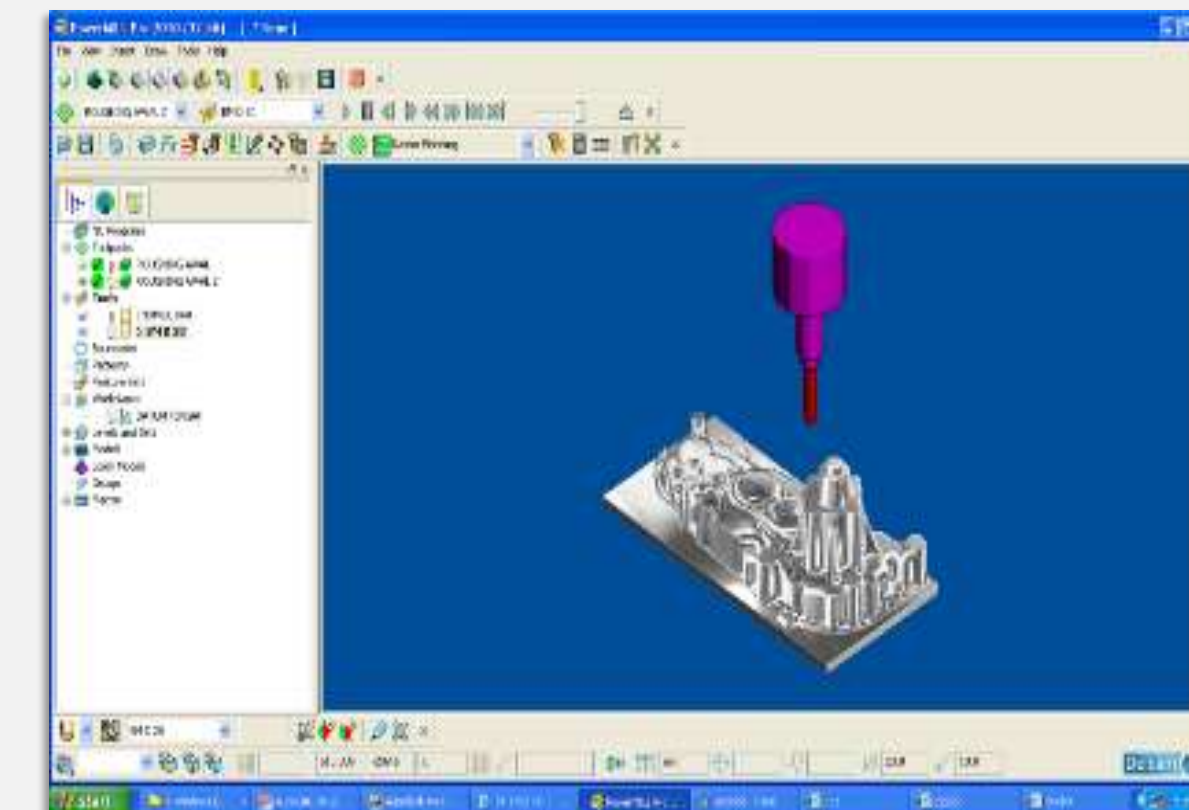
### Internal Tooling Manufacturing



PATTERN MAKER CNC



AUTODESK INVENTOR PROFESSIONAL



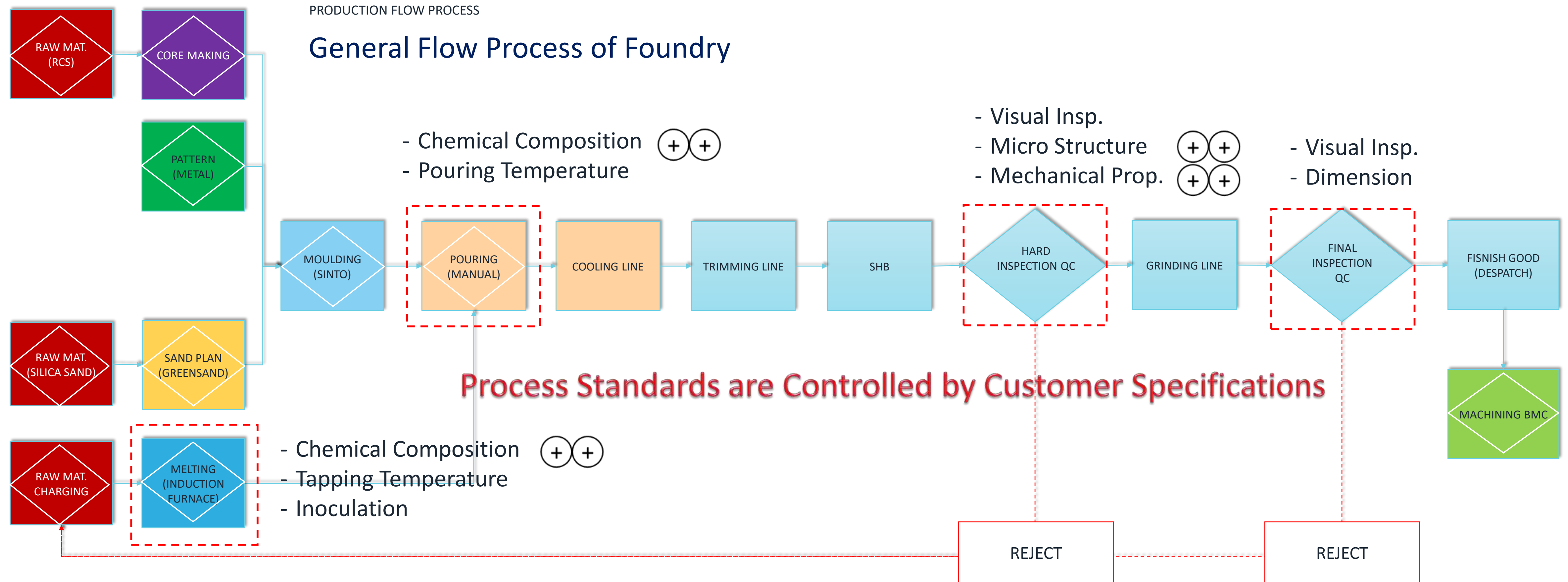
POWER MILL PROGRAM FROM DELCAM

- Speed up Development Time & Flexibility to Meet Customer's request.
- Security & Confidentiality of Customer Design
- Excellent Quality Result
- Competitive Price



# FOUNDRY PRODUCTION FLOW PROCESS

We implement efficient production workflows, eliminate bottlenecks, and apply lean manufacturing principles.



We conduct Stop Call Wait (SCW) for any abnormality during the process and built In Quality (BIQ) in every critical process to ensure the quality of products.



## HI-TECH DRIVEN MACHINING FACILITIES

34



**MACH. MAKINO a51nx**



**MACH. MAKINO SLIM3N**



**EXH GAS LINE / EGR**



**MACH. LEAK TEST  
(14 up to 100 Psi)**



**MACH. HONNING**



**DOOSAN NHP 6300**



**HWACHEON A 600**



## HI-TECH DRIVEN MACHINING FACILITIES



**.SPM (CHECK DTV RR  
DISC)**



**MACH. DOOSAN V8300**



**MACH. DOOSAN 5700**



**MACH. DOOSAN NHP 6300**



**MACH. DOOSAN 4500**



**MACH. DOOSAN DNM5700**



**MACH. BALANCING**



## HI-TECH DRIVEN MACHINING FACILITIES

## WIDE-RANGE CAPABILITIES



**OKUMA MB - 46VA - R**



**HYUNDAI WIA L280**



**HWACHEON 550**



**BALANCING CEMB**



**HONING TONGTAI**



## HI-TECH DRIVEN HEAT TREATMENT AND HARDENING

To increase the strength and hardness of materials, we have Heat Treatment and Hardening processing.

Heat Treatment



Hardening





## HI-TECH DRIVEN AUTOMATION

38

To increase productivity and reduce labor costs, we implement the use of automation technology.

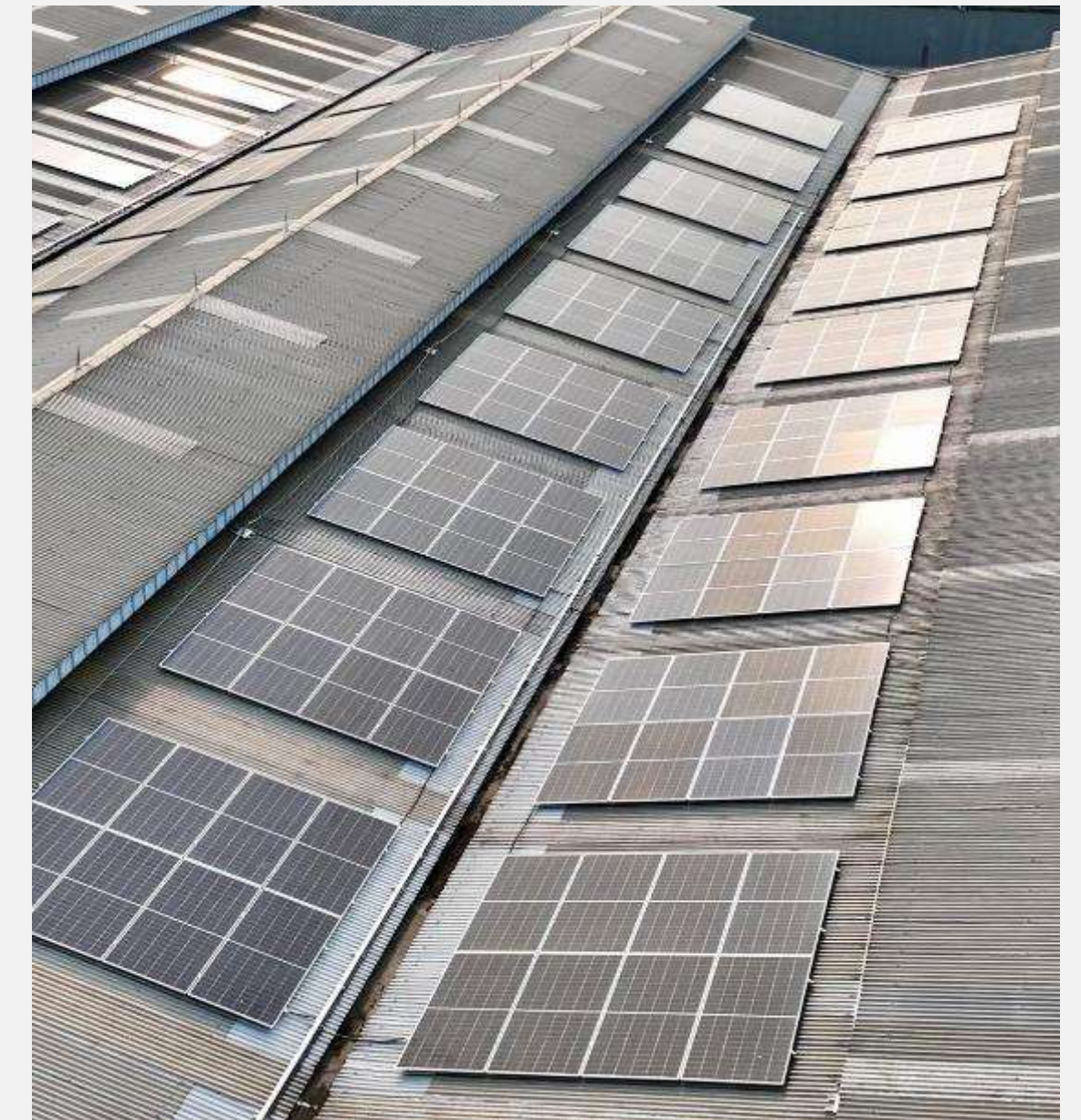








We adopt sustainability practices to enhance energy efficiency, waste reduction, and minimize environmental impact.



Location: PT. Braja Mukti Cakra  
Installation of 317.7 kWp Solar Panels from Helio Synar Energy (Bakrie Power)  
(Renewable Energy Development)



EFFICIENT AND SAFELY SUPPORT TOOLS  
Electric Forklift

We continue to strive the use of environmentally friendly production support tools.







## MAINTENANCE AND RELIABILITY



## MAINTENANCE AND RELIABILITY

We implement preventive maintenance programs to minimize downtime and ensure equipment reliability.

# Maintenance Management System (MMS)

### Components of a Maintenance Management System

- Asset Management
- Work Order Management
- Maintenance Scheduling
- Spare Parts Inventory Management
- Procedure and Work Instruction Management
- Human Resources Management
- Reporting and Analysis
- Technology (Optional)

### Types of Maintenance within an MMS

- Preventive Maintenance (PM)
- Corrective Maintenance
- Predictive Maintenance (PdM)
- Condition-Based Maintenance (CBM)
- Reactive Maintenance (Run-to-Failure)

### Technology

- ERIS (Enterprise Resource Information System)





## IMPLEMENT QUALITY CONTROL MEASURES

We stand to establish to robust quality control processes to detect and prevent defects, ensuring high-quality products.

### Quality Inspection Facilities

#### Measuring Analysis

1. Contour tester
2. Rondcom
3. CMM
4. Roughness tester
5. Contracer
6. Surface Granite
7. Block gauge
8. Calibration tester
9. Standard measurement tools
10. Jig and gauges
11. Tool Presetter

#### Mechanical Analysis

1. Universal Tensile Strength Shimadzu UH 300 kNi
2. Brinell Hardness Machine
3. Impact Machine 30 Kg-m Go-tech
4. Inverted Microscope

#### Sand Analysis

1. Sand Rammer CB
2. Permeability
3. Compressive strength
4. Wet Tensile Strength
5. Active Clay
6. AFS ( Sieve Shakers )
7. Muffle Furnace
8. Moisture Balance

#### Chemical Analysis

Spectrometer ARL 3460 EOS

#### Non-Destructive Test Analysis

1. Dye penetrant test
2. Magnetic Particle test / Crack test
3. Nodularity tester
4. Ultrasonic tester



**SURFCOM**



**RONDCOM**



**RONDCOM**





## APPRECIATION AND RECOGNITION



## Appreciation and Recognition in 2025

Appreciation for **excellent OEM & OES delivery performance** in 2024 from Isuzu to BMC

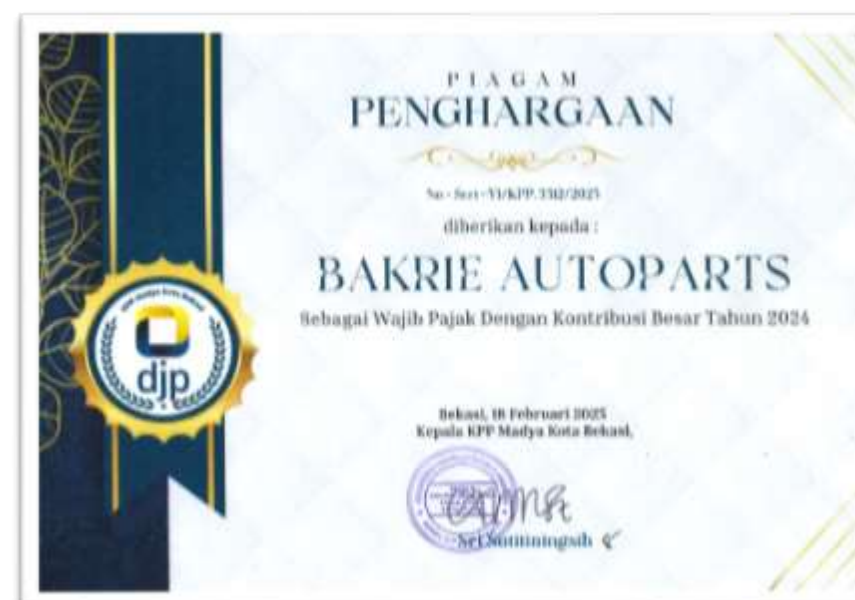
Appreciation as **excellent supplier** FY 2024 (category : casting part) from Yanmar Diesel to BA and BUMM

Appreciation as **taxpayer with biggest contribution** in 2024 from DJP Kota Bekasi to BA and BMC

Appreciation for participating in **providing tree for reforestation program** Kota Bekasi from DLH Kota Bekasi to BMC

**Blue Proper Award** for environmental management in 2024 from KLHK to BMC

Appreciation at the first **MSC QCC event** in 2025, the BA team emerged as **the 3rd champion**







## **PT. BAKRIE AUTOPARTS**

Jl. Raya Bekasi KM 27, Pondok Ungu, Kota Bekasi,  
Jawa Barat, 17132.

Fax : (62-21) 887 2588  
Email : commercial@bakrie-autoparts.com  
Telp No : (62) 813-1158-8625  
Website : www.bakrie-autoparts.com



## **PT. BRAJA MUKTI CAKRA**

Jl. Desa Harapan Kita No. 4, Harapan Jaya, Kota  
Bekasi, Jawa Barat, 17124.

Fax : (62-21) 887 1836  
Email : marketingteam@bmc.co.id  
Telp No : (62-21) 887 8949  
Website : www.bmc.co.id



## **PT. BINA USAHA MANDIRI MIZUSAWA**

Jl. KH. EZ Muttaqien, Alam Jaya, Jatiuwung, Kota  
Tangerang, Banten, 15133.

Fax : (62-21) 590 2488  
Email : info@bumm.co.id  
Telp No : (62-21) 590 2488/89  
Website : www.bumm.co.id